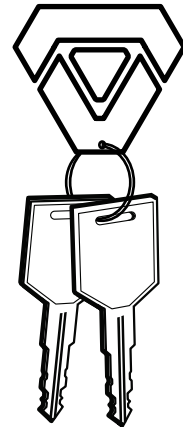
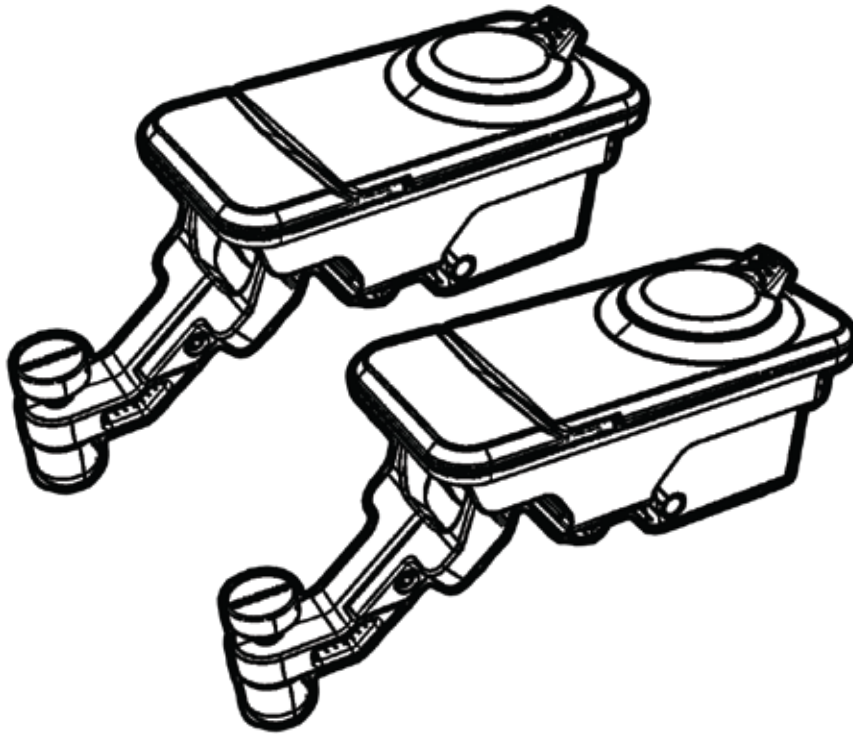


SMARTCAP®

INSTRUCTION GUIDE DUAL RELEASE LATCHES



- ▼ **ENSURE THE REQUIRED TOOLS ARE PRESENT AND ALL HARDWARE CONTENTS ARE ACCOUNTED FOR.**
- ▼ **NEVER USE ACETONE OR THINNERS ON PAINTED PARTS.**
- ▼ **READ THROUGH THE ENTIRE INSTRUCTION GUIDE BEFORE STARTING THIS PROCEDURE AND FOLLOW THE STEPS CAREFULLY TO AVOID ANY DAMAGE TO THE COMPONENTS.**

SMARTCAP.COM

SUPPORT.NA@SMARTCAP.COM - NORTH AMERICA

SUPPORT.SA@SMARTCAP.COM - REST OF WORLD



I-SHEET-NA-DRL

TOOLS REQUIRED



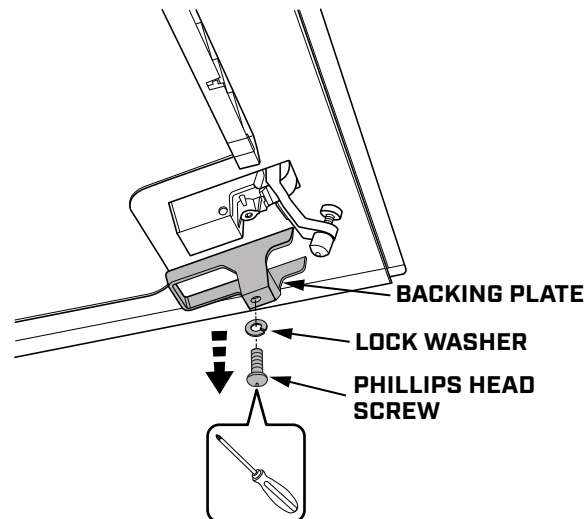
IMPORTANT

- ▼ YOUR DUAL RELEASE LATCHES HAVE BEEN DESIGNED WITH A COUPLE OF IMPORTANT SEALS THAT ARE ENGINEERED TO REDUCE LATCH FREEZING ISSUES IN EXTREME TEMPERATURES. IT IS VERY IMPORTANT THAT YOU TAKE GREAT CARE OF THESE SEALS WHEN OPERATING YOUR LATCHES.

INSTALLING THE DUAL RELEASE LATCHES

STEP 1

OPEN THE DOOR OF THE SMARTCAP AND REMOVE THE SCREW, LOCK WASHER AND BACKING PLATE ON THE LATCH USING A PHILLIPS HEAD SCREWDRIVER AS SHOWN.



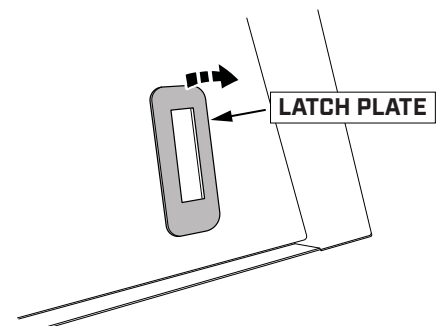
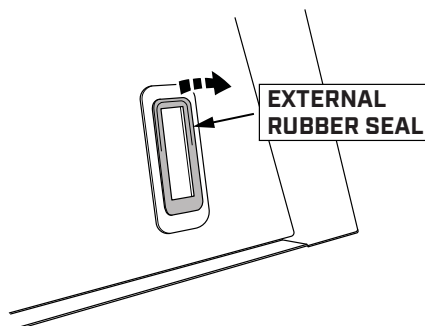
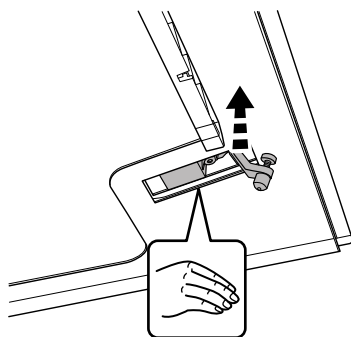
STEP 2

CAREFULLY REMOVE THE LATCH FROM THE DOOR BY PUSHING UPWARDS.

ENSURE YOU REMOVE THE EXTERNAL RUBBER SEAL AND LATCH PLATE FROM THE DOOR'S EXTERIOR.



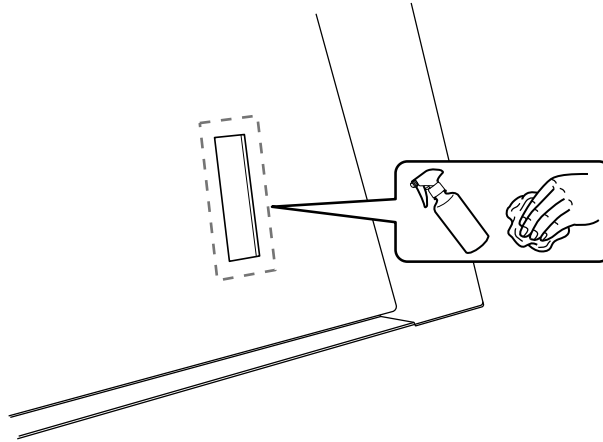
EVO SPORT OWNERS WILL NEED TO KEEP THE LATCH PLATES



I-SHEET-NA-DRL

STEP 3

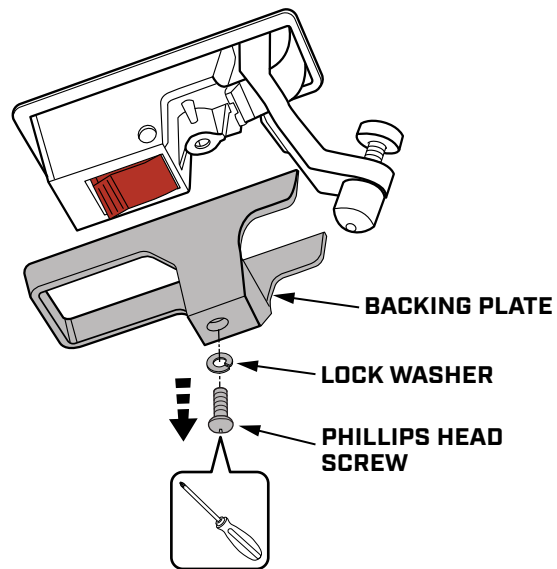
USE GLASS OR ALL PURPOSE CLEANER TO WIPE AWAY ANY DIRT, DUST OR DEBRIS FROM THE DOOR'S EXTERIOR.



STEP 4

LOCATE THE DUAL RELEASE LATCH.

REMOVE THE SCREW, LOCK WASHER AND BACKING PLATE ON THE DUAL RELEASE LATCH USING A PHILLIPS HEAD SCREWDRIVER AS SHOWN.

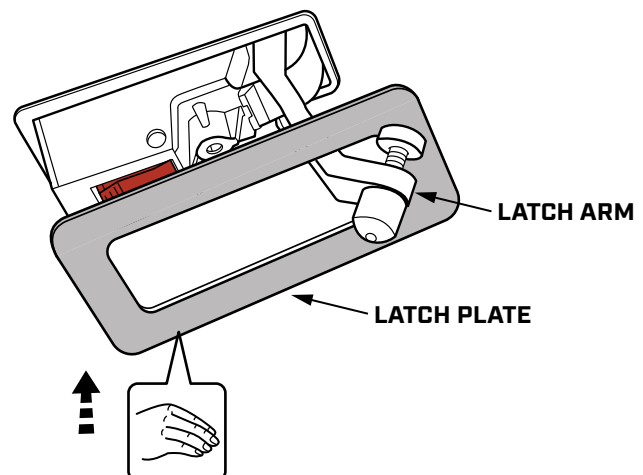


STEP 5

FOR SPORT OWNERS, INSERT THE LATCH PLATE FROM YOUR PREVIOUS LATCHES ONTO THE BACK OF THE DUAL RELEASE LATCH, WITH THE FOAM SEAL ORIENTED TOWARD THE LATCH ARM.



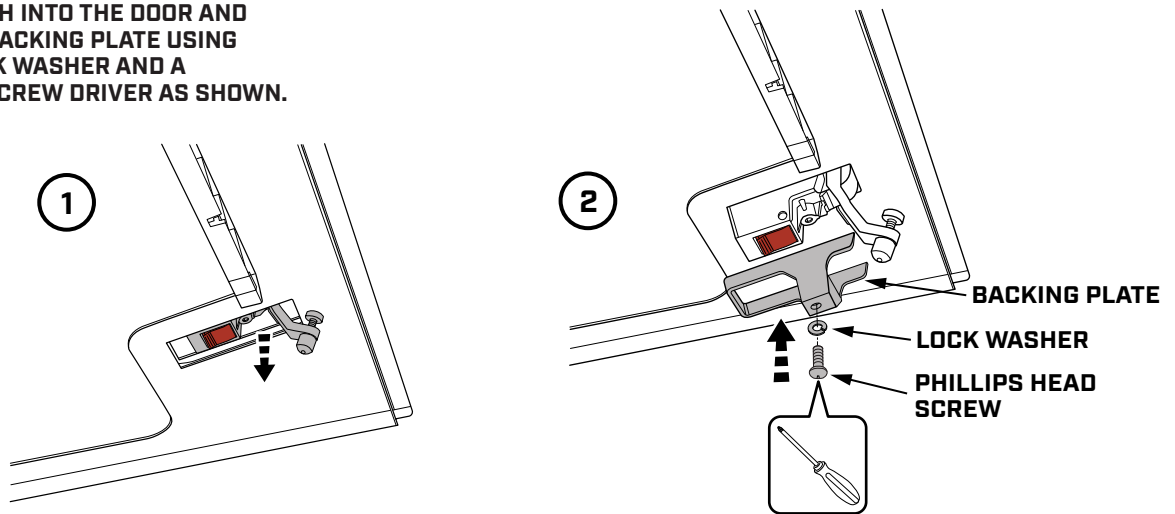
EVO SPORT OWNERS ONLY



I-SHEET-NA-DRL

STEP 6

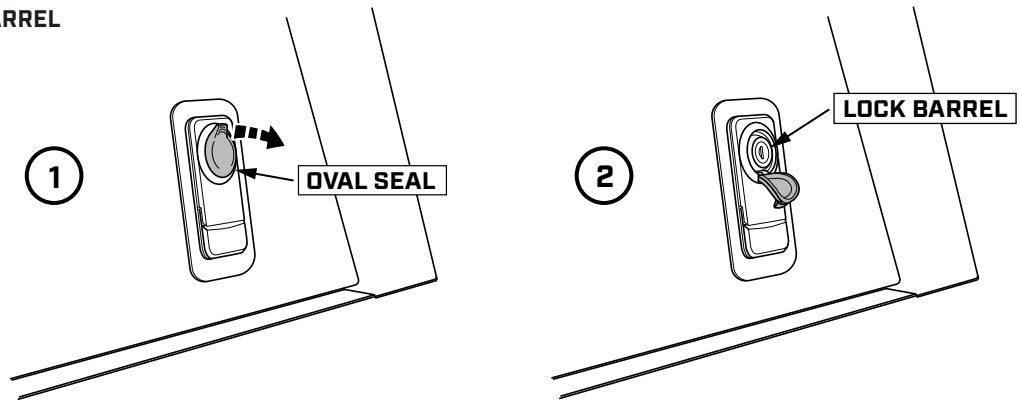
INSERT THE LATCH INTO THE DOOR AND REINSTALL THE BACKING PLATE USING THE SCREW, LOCK WASHER AND A PHILLIPS HEAD SCREW DRIVER AS SHOWN.



OPERATING THE DUAL RELEASE LATCHES

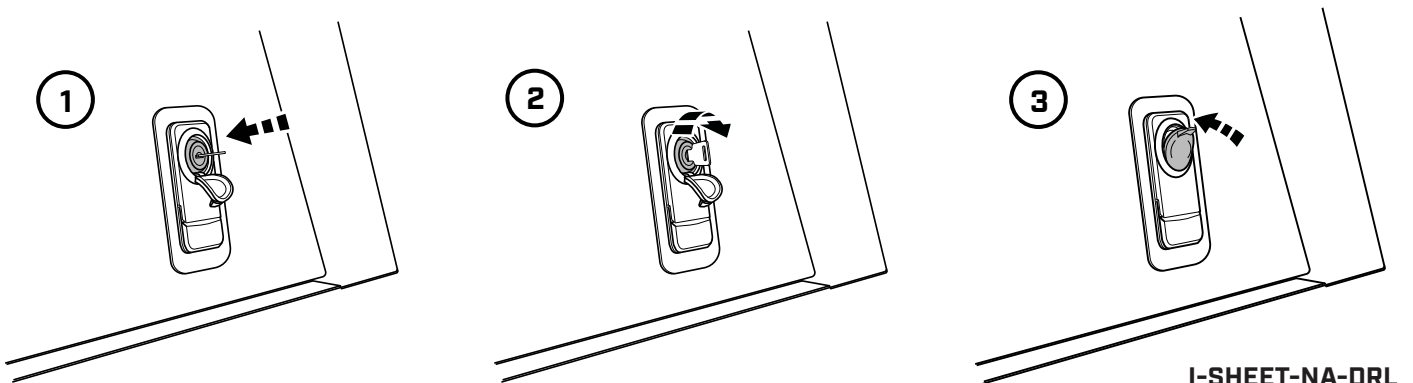
STEP 7

TO UNLOCK THE LATCH, CAREFULLY GRAB THE LITTLE TAB ON THE OVAL SEAL COVERING THE LOCK BARREL AND PEEL IT BACK.



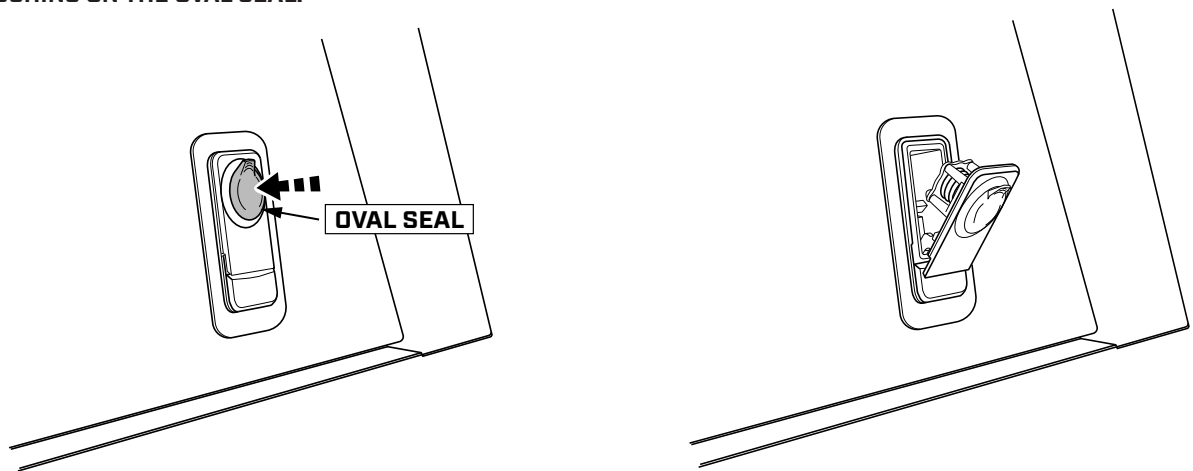
STEP 8

INSERT YOUR KEY, AND TURN IT. THEN REMOVE YOUR KEY, CAREFULLY FOLD THE SEAL BACK OVER THE LOCK MECHANISM, AND RUN YOUR FINGER AROUND THE EDGES UNTIL THE SEAL IS PROPERLY SEATED IN ITS GROOVE.



STEP 9

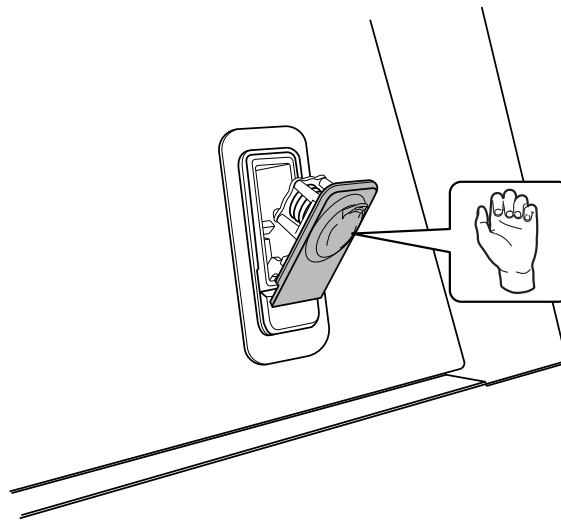
YOU CAN NOW OPEN THE LATCH BY SIMPLY PUSHING ON THE OVAL SEAL.



STEP 10

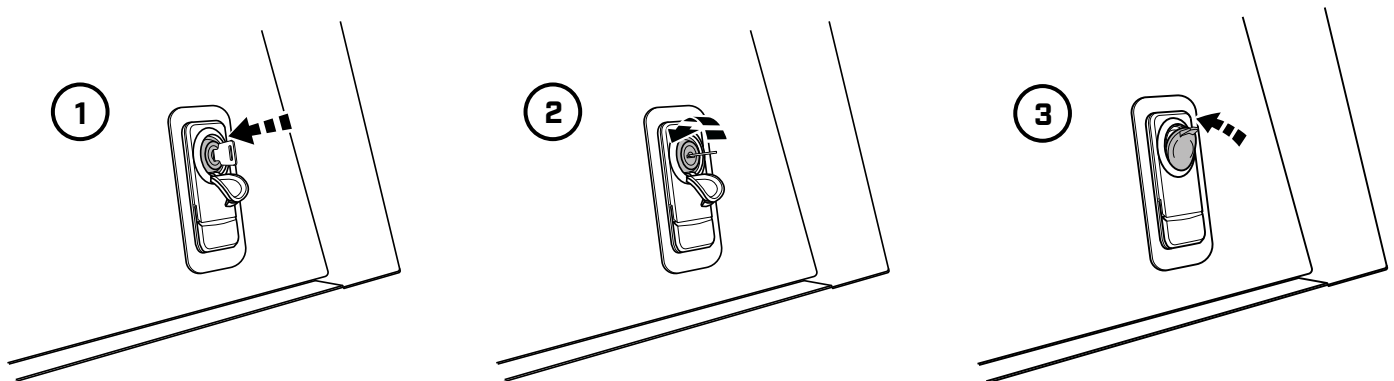
BECAUSE OF THE INTERNAL SEALS, YOU MAY FEEL SOME RESISTANCE WHEN YOU CLOSE THE LATCH.

WE RECOMMEND USING TWO FINGERS OR THE PALM OF YOUR HAND TO PRESS DOWN ON THE OUTER EDGE OF THE LATCH, APPLYING PRESSURE UNTIL YOU FEEL IT CLICK INTO PLACE.



STEP 11

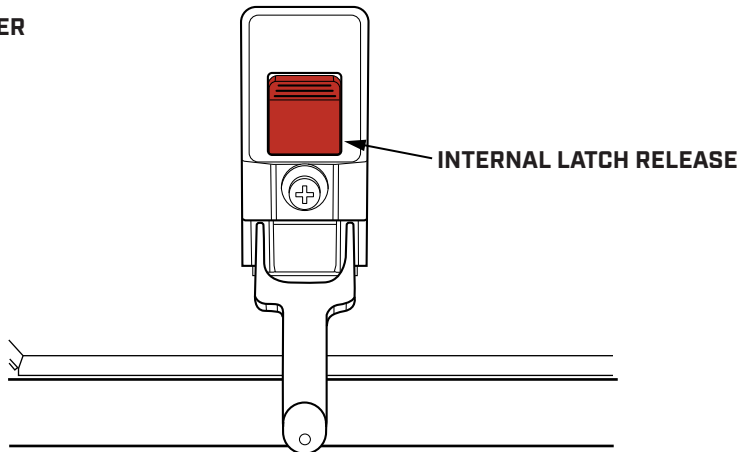
TO RE-LOCK THE LATCH, SIMPLY PEEL BACK THE OVAL SEAL, INSERT YOUR KEY, TURN UNTIL LOCKED, REMOVE THE KEY, AND RE-SEAT THE OVAL SEAL OVER THE LOCK MECHANISM.



I-SHEET-NA-DRL

STEP 12

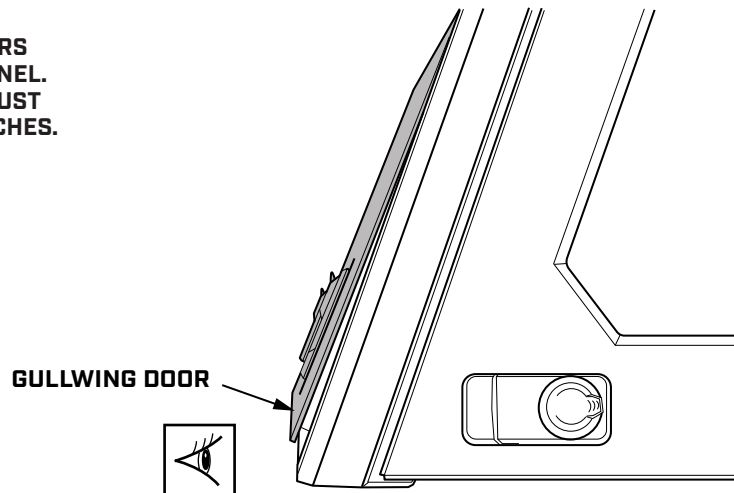
TO UTILIZE THE INTERNAL LATCH RELEASE, SIMPLY PRESS THE RED BUTTON AND THE LATCH WILL OPEN REGARDLESS OF WHETHER IT IS EXTERNALLY LOCKED.



ADJUSTING THE DUAL RELEASE LATCHES

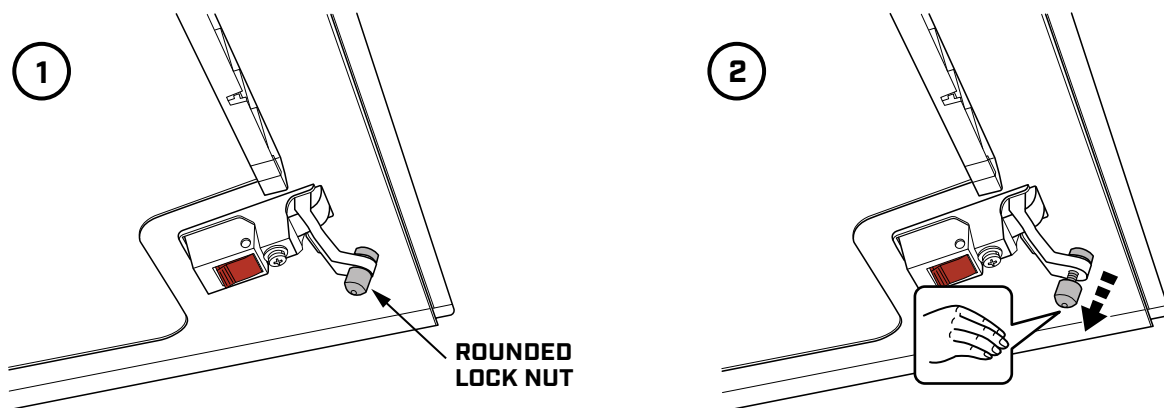
STEP 13

ENSURE YOUR GULLWING DOORS ARE FLUSH WITH THE SIDE PANEL. IF NOT, YOU MAY NEED TO ADJUST THE SET SCREWS ON THE LATCHES.



STEP 14

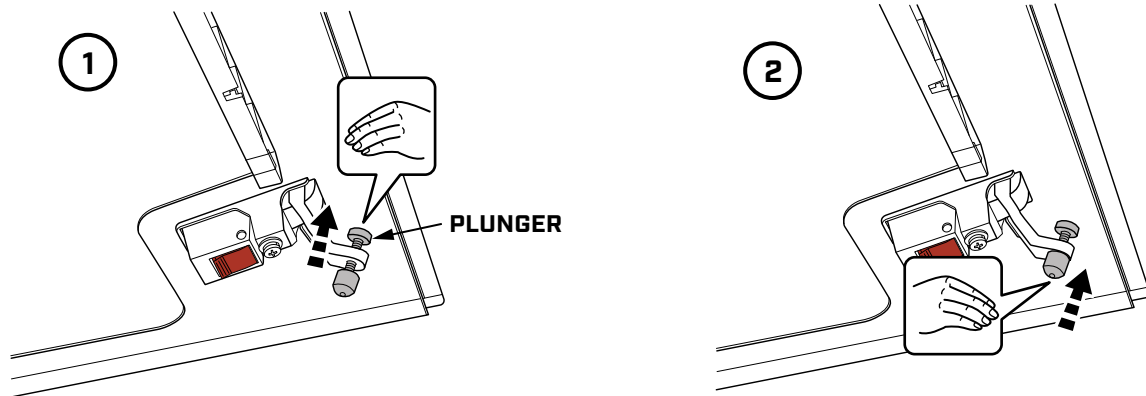
OPEN THE DOOR AND LOOSEN THE ROUNDED LOCK NUT ON THE BACK OF THE LATCH ARM.



I-SHEET-NA-DRL

STEP 15

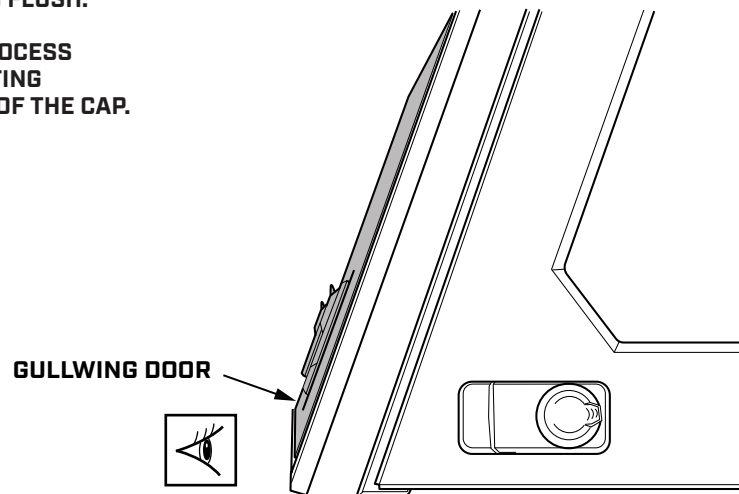
ADJUST THE PLUNGER TO THE HEIGHT AND LENGTH YOU NEED. THEN, USING YOUR FINGERS, TIGHTEN THE ROUNDED LOCK NUT AS FIRMLY AS YOU CAN.



STEP 16

RECHECK TO SEE IF THE DOOR SITS FLUSH.

YOU MAY NEED TO REPEAT THIS PROCESS UNTIL THE GULLWING DOOR IS SITTING PERFECTLY FLUSH WITH THE SIDE OF THE CAP.

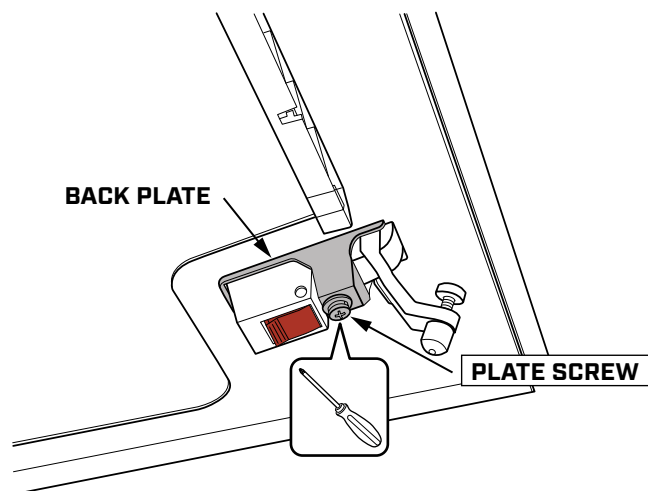


TROUBLESHOOTING THE DUAL RELEASE LATCHES

STEP 17

FINALLY, IF YOU ENCOUNTER AN ISSUE WITH A PARTICULAR LATCH NOT WANTING TO CLOSE, THE SCREW ON THE BACK PLATE HAS LIKELY BEEN OVER-TIGHTENED OR THE LATCH HAS UNSEATED ITSELF FROM THE EXTERNAL BOTTOM SEAL.

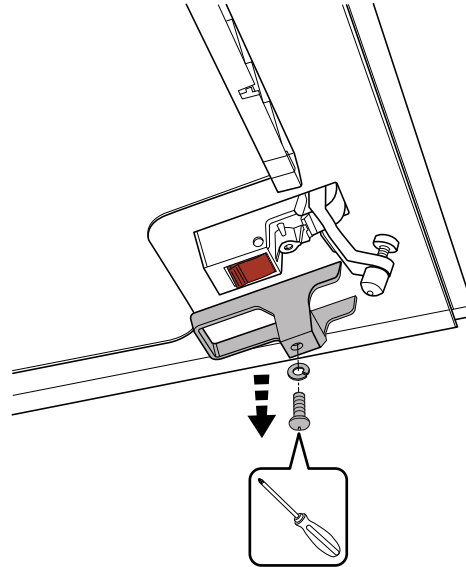
TO FIX THE ISSUE, FIRST TRY SLIGHTLY LOOSENING THE SCREW ON THE BACK PLATE USING A PHILLIPS HEAD SCREWDRIVER AND THEN TRY THE LATCH AGAIN.



I-SHEET-NA-DRL

STEP 18

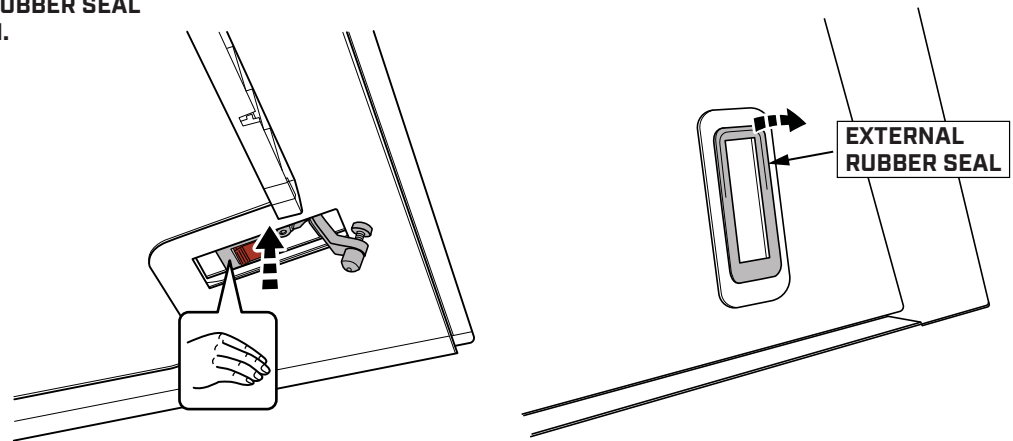
IF THIS DOES NOT FIX THE ISSUE, REMOVE THE SCREW AND BACK COVER PLATE USING A PHILLIPS HEAD SCREWDRIVER AS SHOWN.



STEP 19

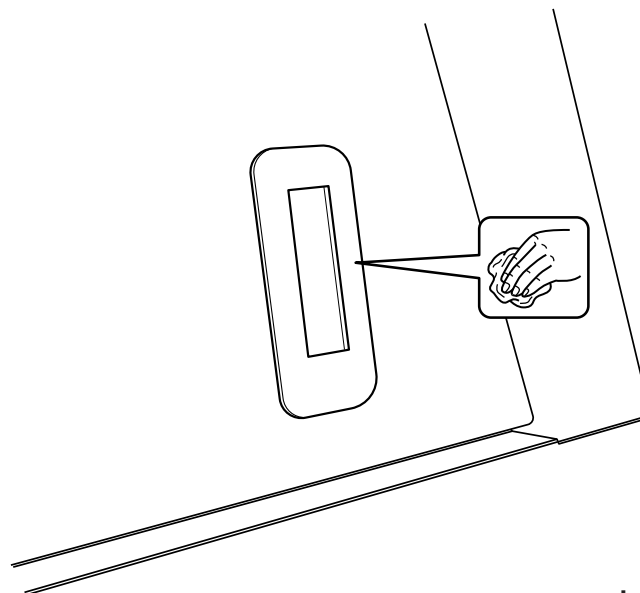
GENTLY REMOVE THE LATCH BY PUSHING IT THROUGH THE HOLE IN THE DOOR.

MAKE SURE THE EXTERNAL RUBBER SEAL IS REMOVED WITH THE LATCH.



STEP 20

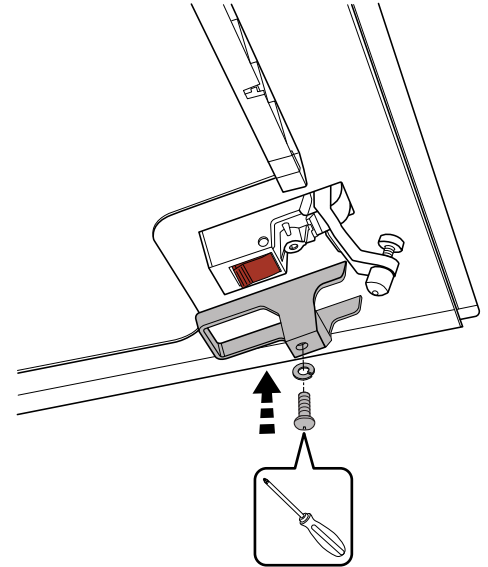
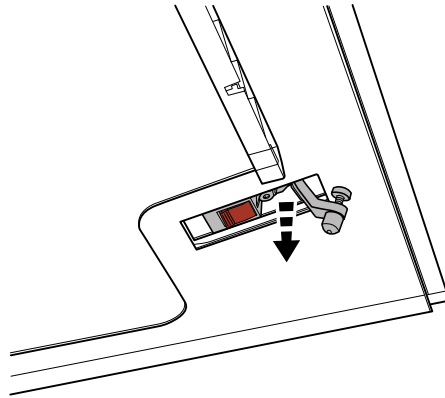
USE A GLASS OR ALL-PURPOSE CLEANER TO WIPE AWAY ANY DIRT, DUST, OR DEBRIS ON THE EXTERIOR OF THE DOOR AND THE EXTERNAL RUBBER SEAL.



I-SHEET-NA-DRL

STEP 21

RE-INSERT THE LATCH THROUGH THE HOLE ON THE DOOR. DOUBLE-CHECK THAT THE LATCH IS EVENLY SEATED IN THE SEAL, THEN REINSTALL THE BACK COVER PLATE AS SHOWN.



IMPORTANT

- ▼ IF AFTER TRYING THESE TWO FIXES YOU STILL CANNOT ENGAGE THE LATCH, PLEASE CONTACT OUR SUPPORT TEAM RIGHT AWAY AND WE WILL GET YOU TAKEN CARE OF.



SMARTCAP[®]

THANKS FOR YOUR PURCHASE.
PLEASE LET US KNOW IF YOU HAVE ANY QUESTIONS.

SMARTCAP.COM

SUPPORT.NA@SMARTCAP.COM - NORTH AMERICA

SUPPORT.SA@SMARTCAP.COM - REST OF WORLD

