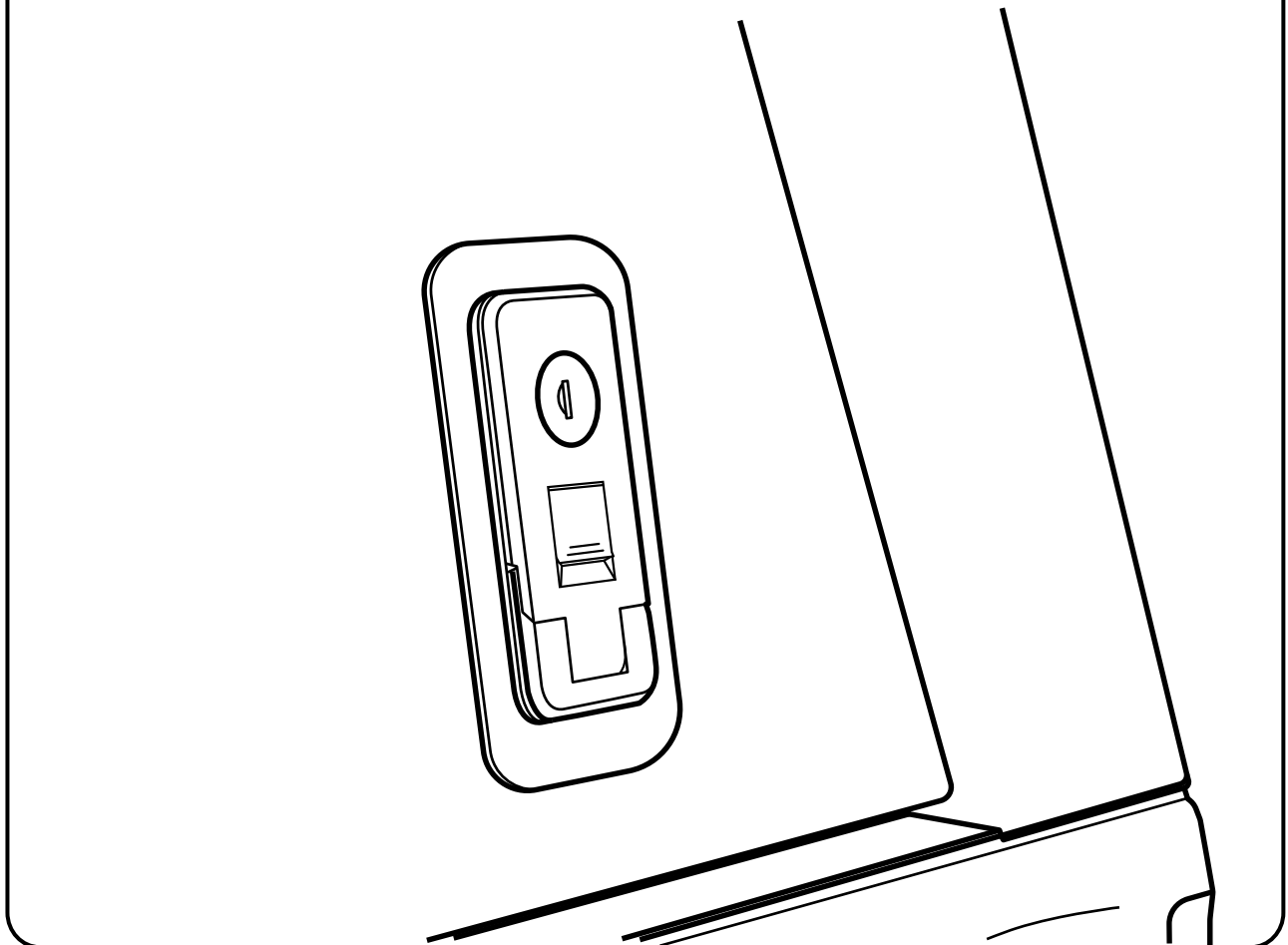


SMARTCAP®

INSTRUCTION GUIDE

FURNLOCK LATCH REPLACEMENT



- ▼ **ENSURE THE REQUIRED TOOLS ARE PRESENT AND ALL HARDWARE CONTENTS ARE ACCOUNTED FOR.**
- ▼ **NEVER USE ACETONE OR THINNERS ON PAINTED PARTS.**
- ▼ **READ THROUGH THE ENTIRE INSTRUCTION GUIDE BEFORE STARTING THIS PROCEDURE AND FOLLOW THE STEPS CAREFULLY TO AVOID ANY DAMAGE TO THE COMPONENTS.**

SMARTCAP.COM

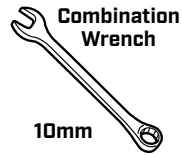
SUPPORT.NA@SMARTCAP.COM - NORTH AMERICA

SUPPORT.SA@SMARTCAP.COM - REST OF WORLD



I-SHEET-NA-FRL

TOOLS REQUIRED

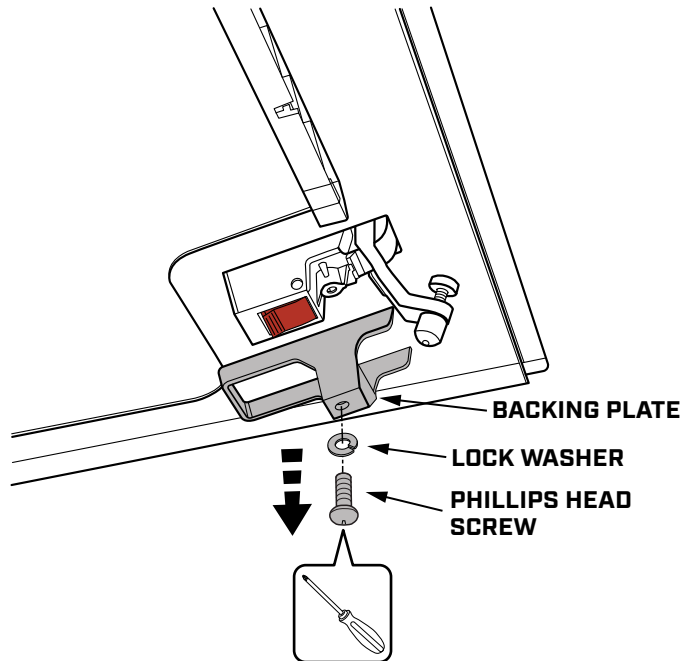


STEP 1

OPEN THE DOOR OF THE SMARTCAP AND REMOVE THE SCREW, LOCK WASHER AND BACKING PLATE ON THE DUAL RELEASE LATCH USING A PHILLIPS HEAD SCREWDRIVER AS SHOWN.



SAVE BACKING PLATE FOR REUSE



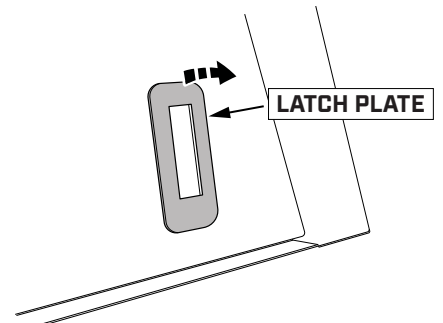
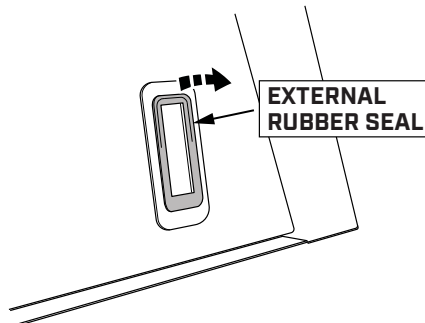
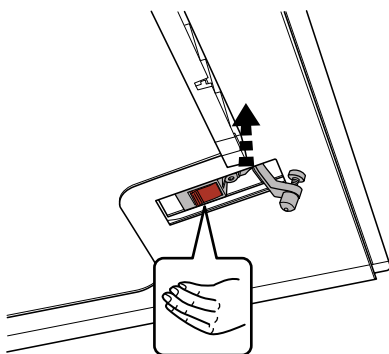
STEP 2

CAREFULLY REMOVE THE DUAL RELEASE LATCH FROM THE DOOR BY PUSHING UPWARDS.

ENSURE YOU REMOVE THE EXTERNAL RUBBER SEAL AND LATCH PLATE FROM THE DOOR'S EXTERIOR.



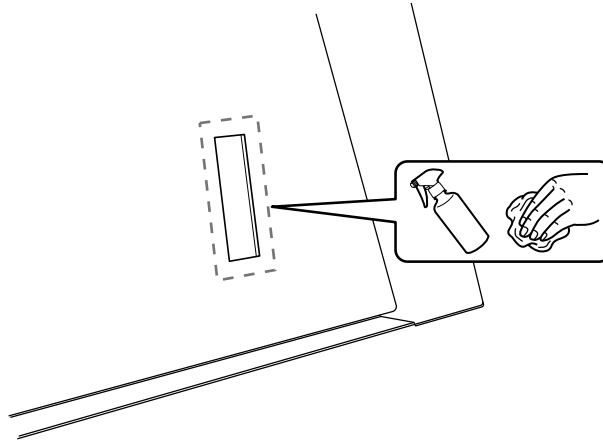
EVO SPORT OWNERS WILL NEED TO KEEP THE LATCH PLATES



I-SHEET-NA-FRL

STEP 3

USE GLASS OR ALL PURPOSE CLEANER TO WIPE AWAY ANY DIRT, DUST OR DEBRIS FROM THE DOOR'S EXTERIOR.



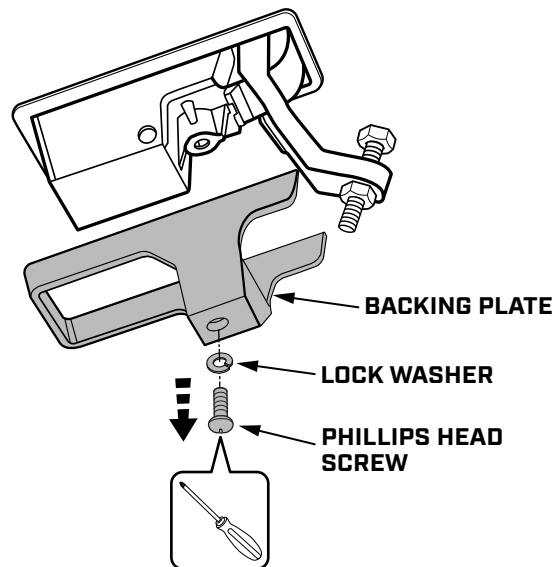
STEP 4

RETRIEVE THE NEW PROVIDED LATCH.

REMOVE THE SCREW, LOCK WASHER AND BACKING PLATE ON THE LATCH USING A PHILLIPS HEAD SCREWDRIVER AS SHOWN.



DO NOT USE BACKING PLATE FROM PROVIDED LATCH

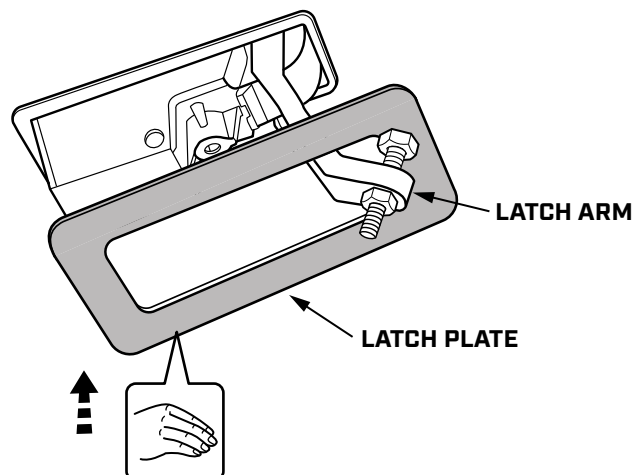


STEP 5

FOR SPORT OWNERS, INSERT THE LATCH PLATE FROM YOUR DUAL RELEASE LATCH ONTO THE BACK OF THE REPLACEMENT LATCH, WITH THE FOAM SEAL ORIENTED TOWARD THE LATCH ARM.



EVO SPORT OWNERS ONLY



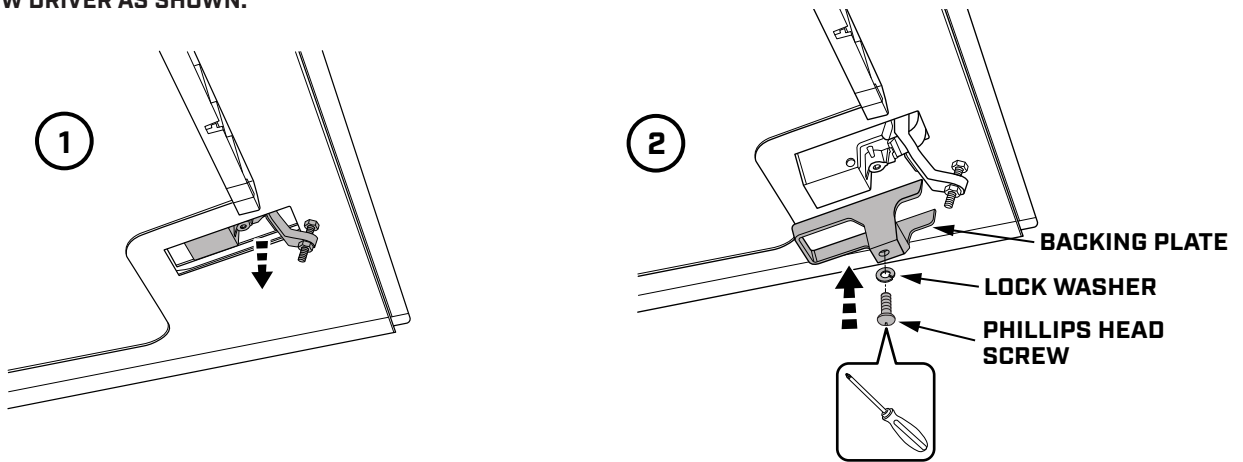
I-SHEET-NA-FRL

STEP 6

INSERT THE LATCH INTO THE DOOR AND INSTALL THE OLD BACKING PLATE USING THE SCREW, LOCK WASHER AND PHILLIPS HEAD SCREW DRIVER AS SHOWN.



USE THE BACKING PLATE FROM DUAL RELEASE LATCH

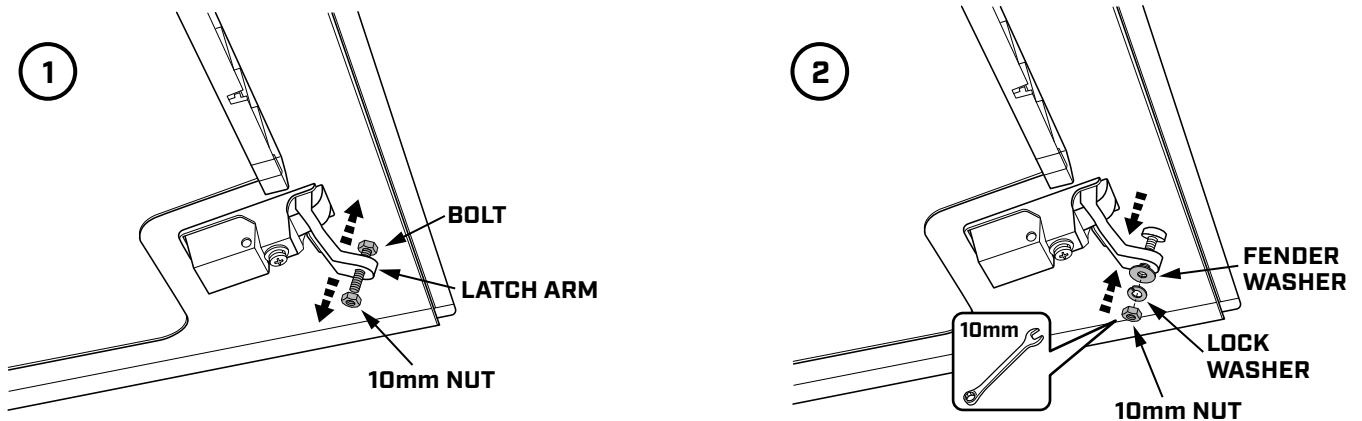


STEP 7

REMOVE THE BOLT AND 10MM NUT FROM THE LATCH ARM.

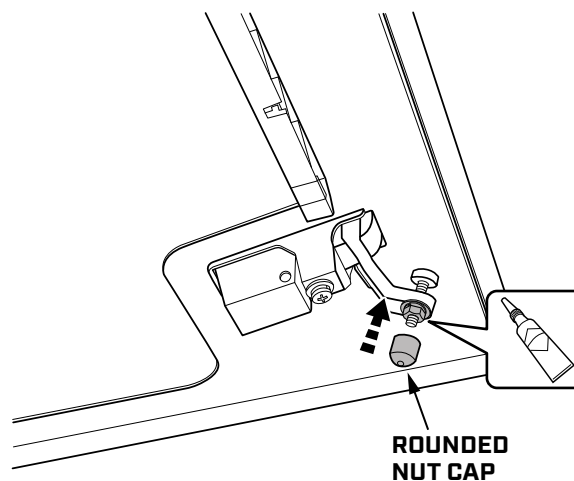
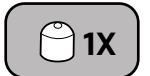


USING A 10MM COMBO WRENCH, INSTALL THE PROVIDED PLUNGER, FENDER WASHER, LOCK WASHER, AND 10MM NUT ONTO THE LATCH ARM.



STEP 8

AFTER ADJUSTING THE PLUNGER TO THE APPROPRIATE LENGTH, APPLY GEL SUPER GLUE TO THE ROUNDED NUT CAP AND PLACE ONTO 10MM NUT.



I-SHEET-NA-FRL



**THANKS FOR YOUR PURCHASE.
PLEASE LET US KNOW IF YOU HAVE ANY QUESTIONS.**

SMARTCAP.COM
SUPPORT.NA@SMARTCAP.COM - NORTH AMERICA
SUPPORT.SA@SMARTCAP.COM - REST OF WORLD

